



# Accent *Prime*

Love Your Shape

SIGNIFICANTLY REDUCED  
TREATMENT TIME

COMBINED TECHNOLOGIES  
FOR ENHANCED, LONG  
LASTING RESULTS

CLINICALLY PROVEN IN  
EXTENSIVE STUDIES

FAST, EASY TO USE, PLUG  
& PLAY TECHNOLOGY

NO DISPOSABLES

**Alma**  
Lasers™



## BRING YOUR CLIENTS TO THEIR PRIME

---

Accent Prime™ is Alma Laser's most advanced workstation for skin tightening, body contouring and aesthetic enhancement. The platform combines the latest innovations in ultrasound and radio frequency (RF) technologies to deliver effective, highly customized treatments- with natural, long lasting results.

Backed by years of proven clinical success as a staple in the field of body contouring, the Alma Accent system now offers its latest generation which simultaneously targets adipocytes and tightens collagen, achieving optimal results using multiple technologies.

A variety of applications and treatment approaches allow you to provide tailored solutions for different skin types and conditions, while technological innovations offer new capabilities including the ability to perform body contouring treatments at unprecedented speed. These new features offer shorter treatment times and even more powerful results.

The Accent Prime system was developed by Alma Lasers, a solid, globally recognized medical aesthetic technology brand. Alma holds a leading position with proven clinical achievements and an impeccable safety record, receiving FDA approval for its Accent family of body contouring systems since 2007. With Accent Prime, both your patients and your clinic are in good hands.

---

*"Accent Prime, the latest addition to the Accent family of products, features the new UltraSpeed applicator with guided ultrasonic wave technology. This new innovation dramatically reduces treatment time- by half"*

**Dr. Ziv Karni, CEO & Founder, Alma Lasers**





## Latest Innovations

Next generation body contouring featuring the latest technological advancements.

### UltraSpeed



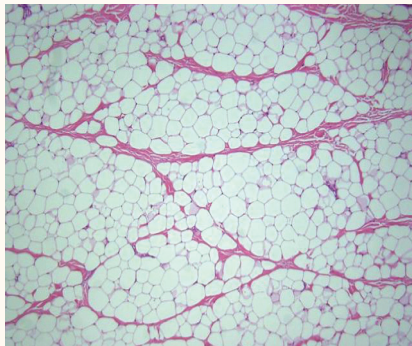
The UltraSpeed handpiece combines a new type of ultrasound technology with an extra-large applicator plate for high speed body contouring. It is Alma's pioneering device using this technology and is available exclusively with the Accent Prime platform. UltraSpeed features a plate type sonotrode which emits guided ultrasonic waves through concentric profiles to heat the target tissue. The US energy is distributed homogenously throughout the treatment area, effectively disrupting stubborn fat cells. Treatment time for the full abdominal area is reduced to approximately 20 minutes, resulting in less operator fatigue while a grid size of 600 cm<sup>2</sup> covers an especially large treatment area.



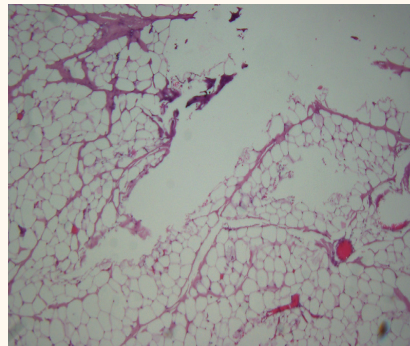
UltraSpeed Handpiece

*"The new UltraSpeed applicator offers a large coverage rate for optimal results. Histologies present clear evidence of damage to lipocytes in the hypodermis"*

*Dr. Joseph Lepselter, VP Clinical Affairs, Alma Lasers*



Normal lipocytes in the hypodermis



Abnormal - Damage in lipocytes

### Tune Face & Tune Body

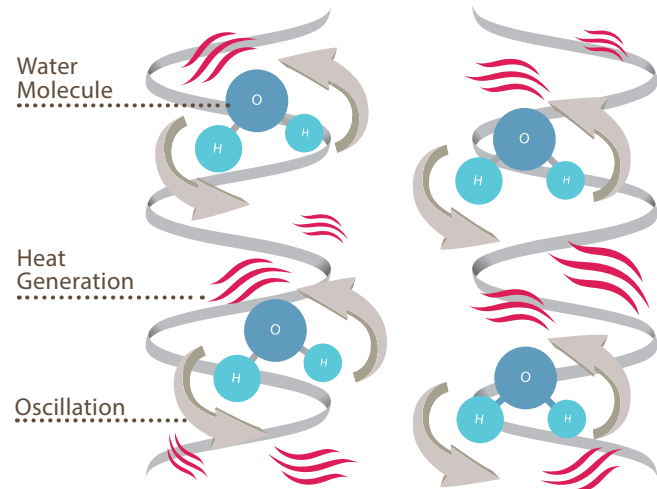
Accent Prime features new stationary applicators that operate at higher power levels and utilize a cooled vacuum mechanism to maximize treatment efficiency. The vacuum technology isolates the treatment area, capturing the tissue fluids within a single defined area, while contact cooling protects the skin and reduces pain. RF energy is then used to produce thermal shock to the tissue, resulting in more focused, concentrated treatment. This unique combination reduces treatment time and number of sessions while yielding more powerful results.



# LASTING RESULTS THROUGH COMBINED TECHNOLOGIES

## Effective Dielectric Heating

Accent Prime features Dielectric Heating- a unique mechanism whereby high radiofrequency (RF) energy is transmitted directly to the tissue, causing rapid rotation of its water molecules. This rotation generates friction which produces strong and **effective** heat. Because skin is composed mostly of water, the heating from this mechanism induces volumetric contraction within the skin- contracting existing fibers and stimulating the formation of new collagen while improving its thickness and alignment. A high RF frequency allows for deep, **homogenous** heating which produces uniform results.



## Powerful Impedance Matching

With a power capacity of up to 300 watts and minimal energy loss through impedance matching, Accent Prime offers maximum power for every treatment. When RF energy is transmitted to tissue, the body's electrical resistance causes power to reflect back to the energy source. With the highest peak power in the market, Accent Prime effectively overcomes the body's impedance, reducing reflection and allowing maximum RF energy to be absorbed by the target tissue.

## Deep UniPolar™

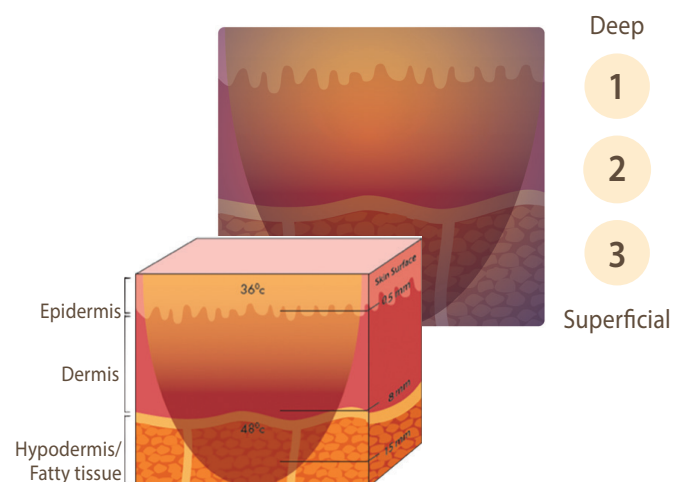
Patented<sup>1</sup> Alma Unipolar technology allows for **focused, safe** and **deep heating** of tissue at various depths within the skin.

Unipolar operates via a single electrode, delivering concentrated RF energy that reaches deeper layers of the skin without patient discomfort.

## Focused Depth Control

Accent Prime's depth control technology allows you to control the precise depth of treatment, with focused heating within the relevant layers of tissue. With variable depth control, practitioners have the flexibility and precision to treat the target area at the specific depth needed for optimal results.

Deep and superficial treatment approaches may also be combined for fully **customized** treatment, depending on the **area** being treated, the **skin type/thickness** and the **indication**. Or, they may be used for combination work on the same area to achieve enhanced results.





## Targets Fat Cells

### *Cold Shear Wave™ & Hot Ultrasound*

Accent Prime features patented<sup>2</sup> Cold Ultrasound Shear Wave technology to selectively target fat cells, while leaving surrounding tissue unharmed. The shear wave vibrations disrupt fat cell membranes, leading to gradual breakdown and release of stored fat. Damaged fat cells are then disposed of the body through the lymphatic system. Accent Prime also offers hot ultrasound technology which generates compressive ultrasonic waves that achieve a high level of cavitation- breaking down local fat deposits thermally. Practitioners may choose to work in either shear ("cold") or compression ("hot") ultrasound modes using the same handpiece- or a combination of both modes for maximum results.

### *Microplasma™*

Using unique microplasma technology, the Accent Pixel RF™ module provides skin resurfacing treatment by both ablating and heating the skin. Fractional ablative microplasma is a gentler energy source that significantly reduces the risk of Post-Inflammatory Hyperpigmentation (PIH). Through controlled perforation and focused energy delivery, Pixel RF treats the affected area while leaving surrounding healthy tissue intact. This allows the skin to heal faster as the epidermis is regenerated, yielding improved results with minimal risk and reduced downtime.

### *IMPACT™ (Trans Epidermal Delivery)*

To maintain and further extend the clinical results achieved via RF and ultrasound, the patented<sup>3</sup> Accent Prime IMPACT™ module employs ultrasound technology to deliver active ingredients beyond the epidermal-dermal junction. Once the skin has been perforated via a microplasma roller (Pixel RF), the IMPACT module emits intermittent positive and negative waves of acoustic pressure, pushing the topical agents through the micro-channels. The oscillating acoustic vibrations create a push and pull effect within the channels, releasing the buildup of intra-cellular fluid and allowing the active ingredients to reach the targeted tissue depth.

## BENEFITS



### SELECTIVE

Focused treatment at multiple depths allows for greater treatment control and better results - leaving surrounding tissue unharmed.



### SAFE

Treatments with Accent Prime are safe and effective for all skin types (I-VI) as well as for thin and delicate areas of the face, neck and décolleté areas.



### COMBINED TECHNOLOGIES

Combined technologies and treatment options yield faster, longer-lasting results with fewer treatment sessions.



### COMFORTABLE

Gradual heating and an integrated cooling system prevent pain for more comfortable treatment.



### NO DOWNTIME

Patients may return to their normal activities after treatment

# INDICATIONS

## Body and Face Contouring

Accent Prime uses the power and efficiency of combined technologies to eliminate excess fat and loose skin, visibly improving the shape and contours of the face and body. The synergy of ultrasound and RF technologies achieves superior results to those of either technology on its own. Cold ultrasound shear waves selectively destroy fat cells while UniPolar RF accelerates their metabolism for fast lymphatic drainage. The application of RF heat energy following fat destruction induces a volumetric contraction effect, tightening the skin and improving its texture while also building new collagen.

### Handpieces

**UltraSpeed** - combines a new type of ultrasound technology featuring guided ultrasonic waves, with an extra-large applicator plate for high speed contouring of especially large treatment areas.

**UltraFace** - combines shear wave and compression ultrasound technologies for contouring of the face. An ultrasound transducer is fixed onto a sonotrode applicator which delivers energy deep beneath the skin.

**UltraBody** - combines shear wave and compression ultrasound technologies with higher power emission for contouring of the body.

**UniBody** - combines high energy UniPolar RF technology with a detachable rotating massage ring to deliver deep dermal heating while increasing circulation within subcutaneous tissue.

*"Facial contouring is a key anti-aging procedure. By combining unique cold US with RF technology, Alma Accent delivers excellent results for treating both fat deposition and skin laxity within the same procedure- allowing clients to recover a more youthful face"*

Dr. Maria Claudia, Almeida Issa, Brazil



Courtesy of Alma Clinical Department

## Skin Resurfacing/Rejuvenation

Uneven skin tone, stretch marks, superficial pigmentation and coarse, uneven skin texture are smoothed out and balanced using focused microplasma RF technology. The addition of Impact technology offers a compound solution for maximally effective skin repair and aesthetic enhancement.

### Handpieces

**Microplasma** - Pixel RF both ablates and heats the skin with microplasma technology.

**Microplasma + IMPACT** - combines microplasma with IMPACT ultrasound technology for enhanced results.



Courtesy of Lehaviv Akerman, MD, Head of Dermatology  
Department Rothchild Medical Center, Israel



## Skin Tightening

Challenging age-related skin imperfections including wrinkles, fine lines, uneven skin tone and skin laxity can be significantly improved with Accent Prime. The treatments effectively address existing indications while also helping to bolster the skin against *future aging*.

### Handpieces

**CoaxiPolar** - creates local, superficial dermal heating in delicate areas with real-time monitoring of skin temperature.

**UniLarge** - uses Unipolar RF energy to contract collagen fibers within the skin and stimulate the formation of new collagen.

**UniFace** - a Unipolar RF handpiece designed especially for treatment of the face.

**Periorbital** - tightens lax skin around the eyes.

**Tune Body** - vacuum-assisted fractional RF for skin tightening of the body.

**Tune Face** - vacuum-assisted fractional RF for skin tightening of the face.



Courtesy of KeeLee Tan, MD. Rejuvenate Clinic, Perth, Western Australia

*"Alma's impedance matching technology allows for maximum RF energy to be delivered to the target tissue. Combined with unique depth control capabilities, the energy can be focused within the subdermal area, thereby preserving the epidermis. The method is safe and easy to use"*

KeeLee Tan, MD. Rejuvenate Clinic, Perth, Western Australia

## Cellulite

Enlarged individual fat deposits beneath the skin that push up against the underlying connective tissue create the uneven skin surface and dimpled appearance of cellulite. Alma Accent employs a combination of RF energy and mechanical massage to increase metabolism of adipose tissue- reducing fat cell volume, stimulating lymphatic drainage and visibly smoothing the texture of the skin.

### Handpieces

**UniForm** - combines high energy UniPolar RF technology with a mechanical applicator to deliver deep dermal heating while increasing metabolism within subcutaneous tissue, improving the appearance of cellulite.

**UniLarge** - uses Unipolar RF energy to speed up metabolism of adipose tissue, visibly smoothing the skin.



Courtesy by Dr. JD McCoy, Contour Medical, Gilbert AZ

**Alma**  
**Accent Prime**  
Love Your Shape

**Alma Lasers** is a global innovator of laser, light-based, radiofrequency and ultrasound technologies for the aesthetic and surgical markets.

We enable practitioners to offer safe and effective procedures while allowing patients to benefit from state-of-the-art, clinically proven solutions.

**Alma Lasers GmbH**

Nordostpark 100-102  
90411 Nürnberg, Germany  
Tel. + 49-911 / 89-11-29-0  
Fax + 49-911 / 89-11-29-99

info@alma-lasers.de  
info@almalasers.com

© 2015. All rights reserved.

Accent, Alma, the Alma logo, Alma Lasers, Accent Prime, Impact, Microplasma, Pixel, Unipolar, and Ultra, are trademarks or registered trademarks of Alma Lasers in the USA and/or other countries.

[www.almaaccentprime.com](http://www.almaaccentprime.com) PBAC17021601  0459

Connect with  
Alma Lasers



<sup>1</sup>Alma Accent Unipolar RF products are protected by USA patents 7630774, 8150532; Europe patent 1715810; Japan patent 4979019; Israel patent 172715. Patents pending in USA and/or other countries. <sup>2</sup>Alma Accent Ultra products are protected by USA patent 8579835; Europe patent 2252369. Patents pending in USA and/or other countries. <sup>3</sup>Alma Accent Impact products are protected by Europe Patent No. 2459268; China patent ZL 201080033374.3; Japan patent 5503741; Korea patent 1358374. Patents pending in USA and/or other countries.