

VARIETY OF HANDPIECES AVAILABLE



WHY PICOPLUS

- High energy output 800 mJ(1.8 GW peak power) still providing stable low energy output
- Dual pulse mode of Pico(450 ps) and Nano-second(2 ns)
- Four wavelengths for best versatility
- Wide-range of precisely controllable fluence options
- 6 handpieces (including 2 type fractional handpieces)
- Convenience features, such as built-in storage
- More lighter convenient New S-Arm



True 450 picosecond laser!
Certified from 3RD party, KTL (Korean Testing Laboratory)



LUTRONIC

450 ps
PICOPLUS

Power and Versatility for
Advanced Treatments and
Mastery Over Difficult Cases

Rejuvenation

Pigment & Melasma

Tattoos



YOUR PREMIUM TREATMENT SOLUTION

4 Wavelengths • Pico & Nano Mode • 1.8 GW High Peak Power

LUTRONIC GLOBAL
19 Fortune Drive, Billerica, MA 01821 USA
TEL : +1-888-588-7644
E-MAIL : office@lutronic.com / usa@lutronic.com

LUTRONIC ASIA CENTER
Lutronic Center, 219 Sowon-ro, Deogyang-gu, Goyang-si, Gyeonggi-do, KOREA
TEL : +82-31-908-3440 / FAX : +82-1600-3660 / E-MAIL : korea@lutronic.com

LUTRONIC GERMANY
Paul-Ehrlich-Strasse 38, 63322 Roedermark, Germany
TEL : +49-6074-2153180 / FAX : +49-6074-2153190
E-MAIL : germany@lutronic.com

LUTRONIC JAPAN
12F, Tokyo Front Terrace, 2-3-14, Higashi-Shinagawa, Shinagawa-ku, Tokyo, JAPAN
TEL : +81-3-6433-3041 / FAX : +81-3-6433-3042 / E-MAIL : japan@lutronic.com

9F Hakataekimae Center Bldg., 1-14-16 Hakataekimae Hakata-ku Fukuoka city, Fukuoka-pref. 812-0011 Japan
TEL: +81-92-477-2755 / FAX: +81-92-477-2756 / E-MAIL : japan@lutronic.com

LUTRONIC CHINA
Yuzhou plaza 2001 room, Jingang road 299 no, Pudong district, Shanghai, 200120, China
TEL: +86-21-5019-3891,3893 / FAX: +86-21-5019-3865
E-MAIL : china@lutronic.com

lutronic.com

©2018, LUTRONIC Group of Companies. All rights reserved. LUTRONIC, its logo, PICOPLUS, Gold Toning, RuVY Touch, and Focus Dots are trademarks or registered trademarks of the LUTRONIC Group of Companies. This product or the use of this product is covered by one or more US and foreign patents or patent application pending. System or Handpiece designs and specifications are subject to change without notice. LUTRONIC-BR-20180206 For International Use Only

LUTRONIC

PICOPLUS premier laser safely treats Melasma and beyond

PROVEN EFFECTIVE TREATING MELASMA

The number one maker of Nd:YAG technology is delivering the next evolution of premium platforms to your clinic. PICOPLUS is proven safe and effective for the treatment of melasma. It has the range of pulse width, power and wavelengths to allow you power over even the most difficult cases.

✓ the 1st MFDS Approved

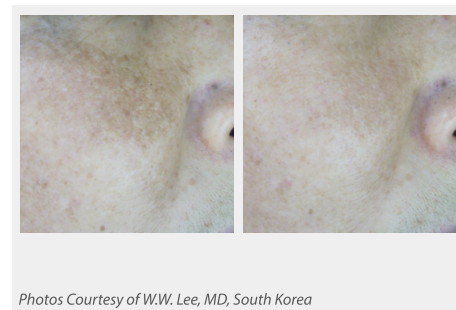
✓ Published in Laser in surgery and medicine in September 2017

PROVIDE THE RESULTS YOUR PATIENTS DEMAND

PICOPLUS provides the treatment versatility, precise fluence and pulse control needed to achieve the results your patients want, regardless of difficulty.

BROAD RANGE OF APPLICATIONS FOR IMPROVED ROI

- | | | |
|--------------------------|---|--|
| PICO TONING | • Tattoo (multi-colored & black) | • Skin Rejuvenation (Cold Rejuvenation) including :
- Wrinkle and Acne scars
- Pore |
| TATTOO REMOVAL | • Pigmentary issues such as :
- Melasma
- PIH | • Redness issues such as:
- Post-acne Erythema
- Inflammatory Acne
- Telangiectasia
- Facial Flushing
- Rosacea |
| GOLD TONING | - Nevus of Ota
- ABNOM | |
| RUVY TOUCH | - Lentigo
- Freckles | |
| FOCUS TONING | - Seborrhic Keratosis
- Cafe-au-lait | |
| DUAL FOCUS TONING | | |



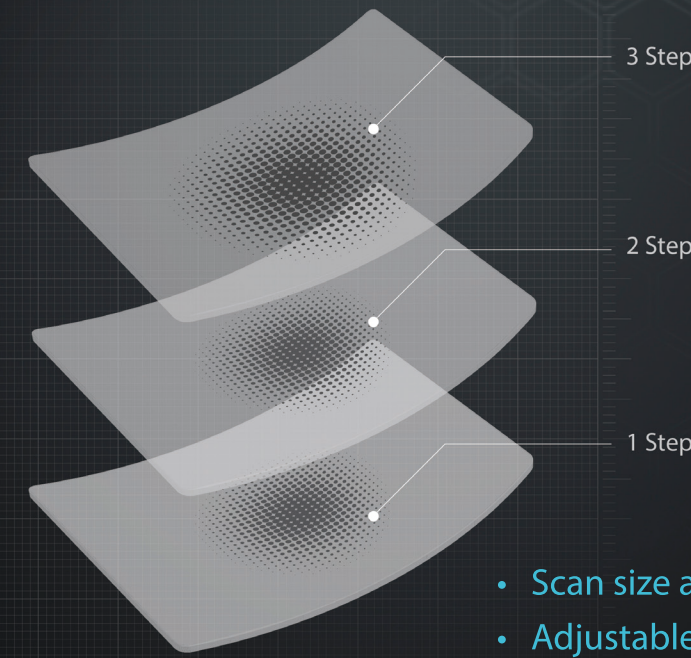
The Power Behind the Pulse

The next evolution in fractional rejuvenation is here; delivered via the dual wavelength adjustable depth, micro-beam spot size and scan sized handpiece. You can approach multi layers of skin.

INNOVATIVE HISTOLOGICAL CHANGES FOR SKIN REJUVENATION

Picoplus's Dual Focused Dots causes a strong photo-mechanical disruption as making LIOB(Laser Induced Optical Breakdown) in dermis or around dermal-epidermal junction, while leaving the epidermis intact.

Dual Focused Dots Handpiece



EXPERTS AGREE, PICOPLUS PROVIDES AN ADVANTAGE



"the system offers many other benefits, including pigment removal, rejuvenation and laser facial toning. The user interface is very friendly and comes with a toggle function for adjusting fluence energy settings very easily. Settings can be adjusted at any stage of treatment and the warm up time is very quick."

Dr. Saleem Loghdey, Australia